



Private Event Rentals



Welcome!

Located in the heart of Sharpsburg, Atithi Studios is a one stop shop for artists of any and all disciplines who may be looking for community, opportunity, and so much more! The three floor building is dedicated to art and entertainment with private studios on the second and third floor, and a gallery which doubles as a flexible event venue on the first floor. Our mission is to invest in artists so they have the tools, confidence & support they need to excel in their practice, in the hopes they will reinvest that energy into their community.

Atithi, Bengali for guest, is an ode to Rabindranath Tagore's story about a boy who chooses the life of a wanderer. It's a gift to the artist community of Pittsburgh – respite for the artist soul. A place to give & take; to inspire & be inspired.

aa-TIY-THHiy



Table of Contents

04 Atithi Event Venue

05 Pricing Structure

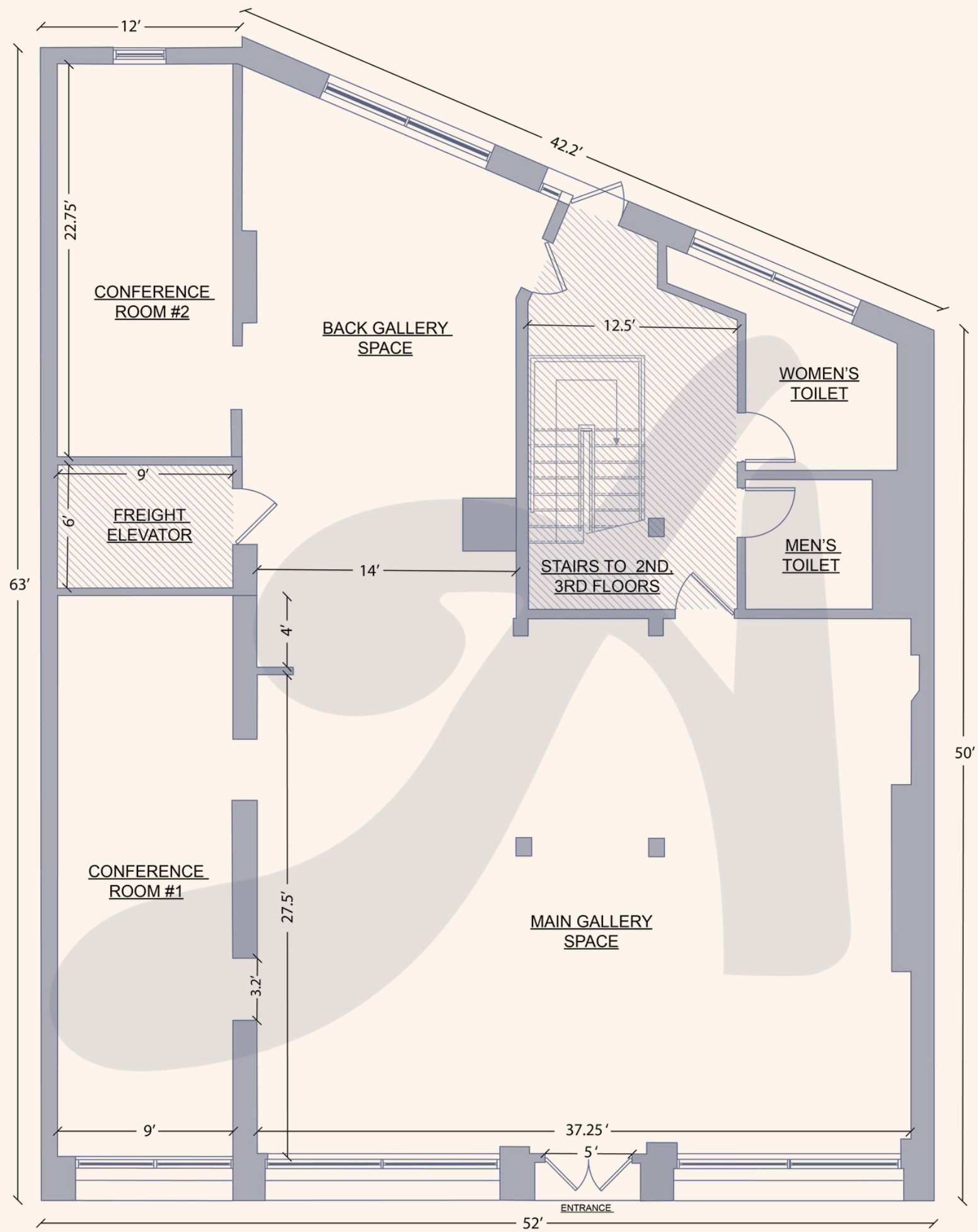
07 High Tea Package

08 Workflow for Client

09 Trusted Vendors

10 FAQs





FIRST FLOOR: 3,173 SQ. FT.

Events

We offer a unique venue space that includes spacious conference rooms, relaxed lounge areas, open floor art gallery featuring local artists, and a podcast studio. It's perfect for intimate receptions, showers, corporate retreats, performances, fundraisers, and creative events.

1020 N Canal St. Sharpsburg, PA 15215

Pricing for Private Events

Weekday Rate
\$150/hr
2 hour minimum

Weekend Rate
\$150/hr
2 hour minimum

Weekend All-Day Rate
\$175/hr
6 hour minimum

ALL EVENTS INCLUDE :

Atithi Staff onsite

Set up and tear down assistance (30 min before & after)

Gallery tables, chairs, & other furniture

we offer a 30% off discount to all nonprofit and local Sharpsburg organizations



Pricing - Add Ons

ADDITIONAL SERVICES INCLUDE :

Podcast Studio Rental: \$75

Additional Staff Support (exceeding the 30 min. before & after): \$100

Conference Room Spaces: \$100/each for length of event

Setup and Use of projector: \$50

Speaker and Mic rental: \$50

Sternos for catering (3 total) : \$20

High Tea

Private Event Package

Page 07

Atithi Studios

Seating:
min. 20, max. 50
Pricing:
\$45/head +
\$75 service charge



Adda
— COFFEE —
&
TEA HOUSE

Adda -Northside

Seating:
min. 8 max. 12
Pricing:
\$45/head +
\$50 service charge

We have been partnering with Adda Coffee and Tea to deliver an authentic high tea experience. Enjoy an afternoon with friends accompanied by a delicious selection of teas by Rishi Teas and mouthwatering flavors from Chef Becca.

WORKFLOW FOR CLIENT

- 01** Inquire on our website & schedule a tour of the space and/or a virtual consultation.
- 02** During the tour/consultation we'll collect information about the vision for your event.
- 03** We'll create a BEO, outlining all of the details and give you a quote for the rental.
- 04** You'll be asked to sign the contract and credit card authorization form to secure your spot.
- 05** In the weeks leading up to the event, we'll confirm all details with you and your vendors.
- 06** On event day, we can focus on having a great time!



Vendor List

We have cultivated excellent relationships with a variety of local vendors to make planning your event easy!



Food



Beverage



Music



Decorations

Mindy's Take & Bake

Bubbly Bartending

DJ Femi & Wade Anthony Jr.

Enchore Event Design

Frankie's Sausage

9 O'Clock Wines

Keystone Artist Connet

Alpha Lit

ShadoBeni

Hitchhiker Brewery

DJ Deesus

Silk Elephant

Dancing Gnome Brewery

DJ Rachna

Baked True North



Does staff help with setup and teardown?

Atithi staff will handle both within an allotted 30 min period before and after the event. Setup and teardown exceeding the 30 min. block will cost \$100

How does having alcohol at an event work?

Atithi Studios does not have a liquor license, therefore we cannot serve alcohol during events. Clients are welcome to BYOB or contract a beverage vendor to serve drinks.

What's included in the private high tea package?

- Personalized selection of rishi teas
- Two courses of authentic high tea sandwiches/baked goods, served on tiered trays, and prepared by our fantastic chef becca
- Adda servers
- Space setup and teardown
- Decorative table cloths and flowers based on the theme of your choice

What is the capacity for seating?

- 50 folding chairs
- 10 12-ft tables
- plus 2 cocktail tables and 5 small side tables

Does the building have a kitchen?

Atithi does NOT have a kitchen-- only sinks to clean dishes and a refrigerator to store food/beverages in

What is parking like?

Atithi is located on North Canal Street, a one-way with street parking on both sides, ticketed from 9-5 pm on weekdays, free on weekends. Free street parking at the back of the building on Clay Street.



PHOTO GALLERY

